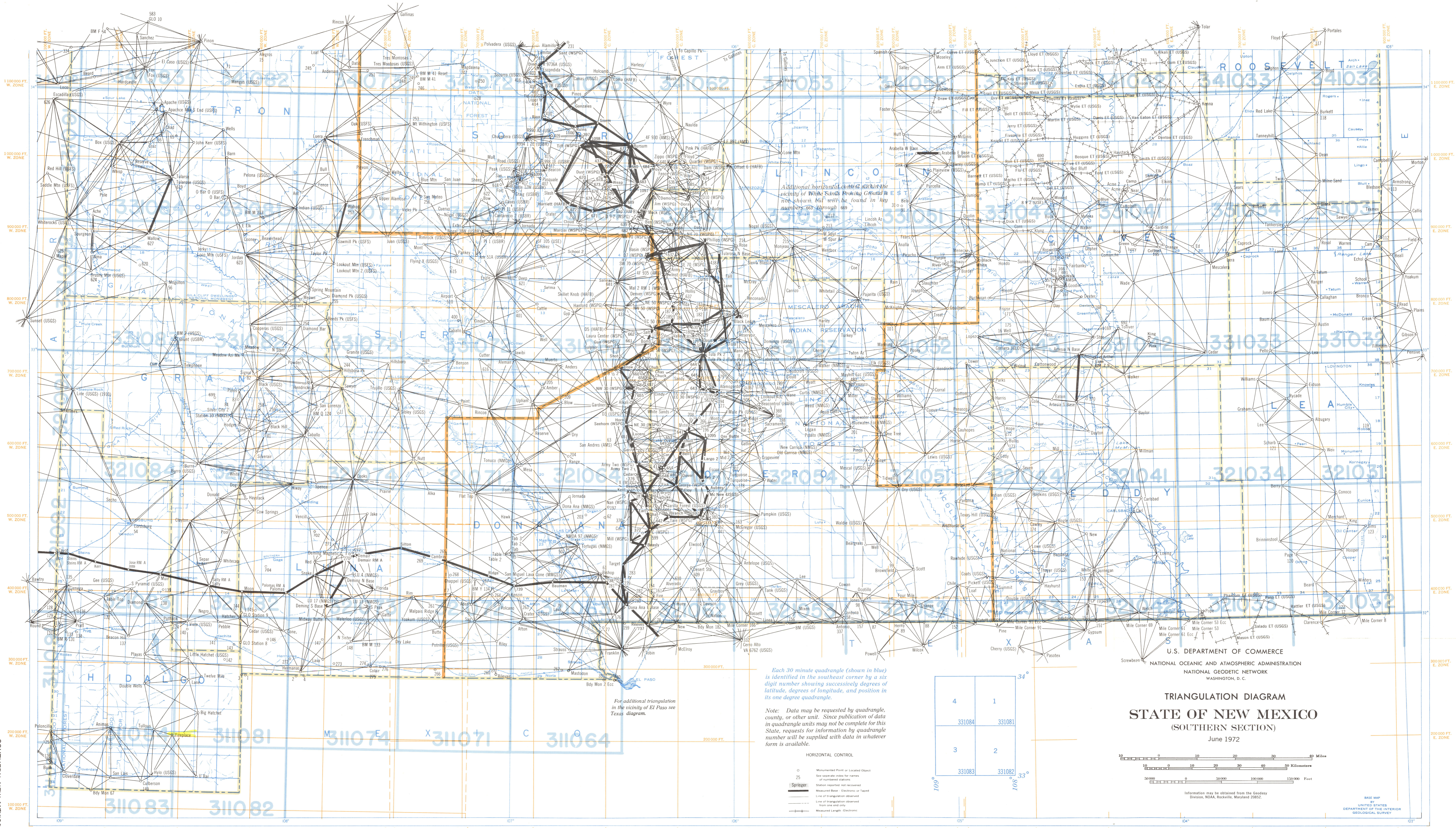


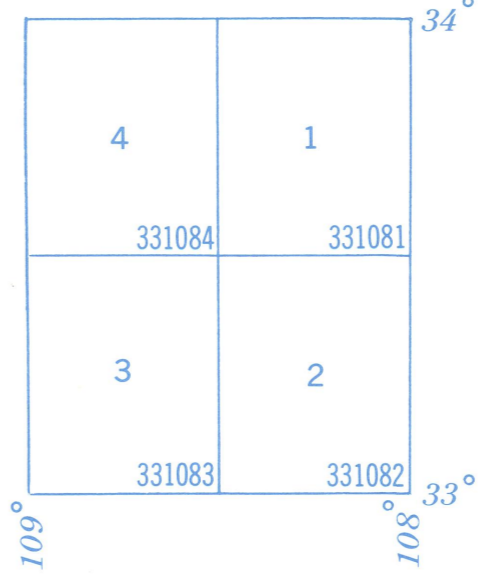
SOUTHERN NEW MEXICO



Each 30 minute quadrangle (shown in blue) is identified in the southeast corner by a six digit number showing successively degrees of latitude, degrees of longitude, and position in its one degree quadrangle.

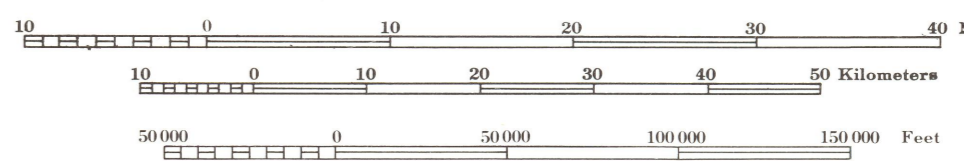
Note: Data may be requested by quadrangle, county, or other unit. Since publication of data in quadrangle units may not be complete for this State, requests for information by quadrangle number will be supplied with data in whatever form is available.

- HORIZONTAL CONTROL**
- Monumented Point or Located Object
  - Base line or other line for purposes of horizontal stations
  - Station monumented but not measured
  - Measured Base, Electronic or Taped
  - Line of triangulation observed
  - Line of triangulation observed from one end only
  - Measured Length, Electronic



U.S. DEPARTMENT OF COMMERCE  
 NATIONAL OCEANIC AND ATMOSPHERIC ADMINISTRATION  
 NATIONAL GEODETIC NETWORK  
 WASHINGTON, D. C.

**TRIANGULATION DIAGRAM**  
**STATE OF NEW MEXICO**  
 (SOUTHERN SECTION)  
 June 1972



Information may be obtained from the Geodesy Division, NOAA, Rockville, Maryland 20852.

BASE MAP BY UNITED STATES DEPARTMENT OF THE INTERIOR GEOLOGICAL SURVEY

SOUTHERN NEW MEXICO